

Teamboard Interactive Calibration

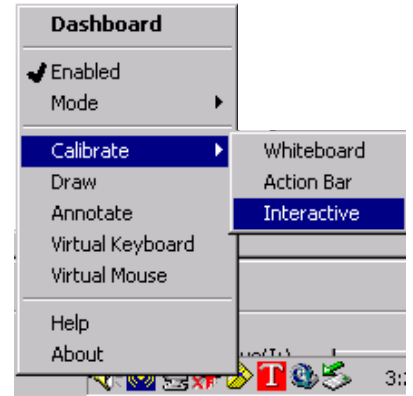
This is necessary to tell the Teamboard software the exact location of the projected image, relative to the screen. Whenever the screen or projector has been moved or whenever touching the screen is not interpreted precisely (it's off from where you touch), you need to perform Interactive Calibration.

At the Instructor's Station, click on the red T in the System Tray (lower right corner of the desktop).

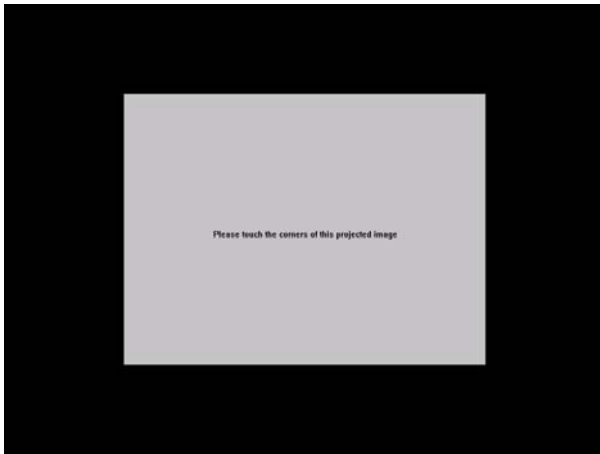


In the menu that pops up, move the mouse cursor over **Calibrate**. In the menu that appears, click on **Interactive**. (You do not need to perform the other types of calibration.)

When Teamboard asks you to manually adjust the projector so that the image is within the screen, do so as needed and then click OK.



The Teamboard screen will look like this, with the message, "Please touch the corners of this projected image." Use your finger or the white Teamboard stylus to touch exactly on the point of each of the four corners of the white image. Press until you see a green check mark (you will hear a sound if speakers are on). The calibration screen disappears automatically. The order in which you touch the four corners does not matter. If it times out, start over. If you have successfully calibrated, the screen will respond at or very near any spot on it that you touch.



You Are Ready to Use the Team Board

You may now launch whatever application you wish to use.

By pressing the screen lightly, you can do most things a mouse can do at a conventional monitor. Depending on the application, your touch can move the cursor, activate hyperlinks in a browser, advance PowerPoint shows, click on buttons, put the cursor in search boxes, etc.

To type into a search box or other form, it is easiest to return to the Instructor's Station keyboard.